



ANNUAL REPORT | FY-2017



Community Connections Inc

Opportunities for People with Disabilities

SERVICES
CCI PROVIDES

Day Habilitation...
focuses on helping each individual overcome the obstacles that interfere with skills development or stand in the way of their goals.

Employment Services...
operates on a simple belief that everyone who wants to be employed is employable. We are able to successfully match candidates with a position at local companies

Life Skills...
a key part of making people more self-sufficient and instills feelings of empowerment and an "I can do it myself" attitude.

Elder Care...
provides a full program of individually-focused activities designed to promote health, physical well-being, and self-esteem that allow seniors to continue to explore their interests

**High School Transition/
Pre-employment Services (Pre-ETS)...**
provides individualized services and a robust job-readiness curriculum to match each student's unique abilities, interests, and goals

Individual Support...
provides one-to-one specialized supports, services, and activities that incorporate a range of individually-tailored therapies and activities recommended by our specialists

Transportation...
offers daily rides to and from our day programs, an outing to a bank, or even a group trip to the park.



Our Employment Services Program is certified at the highest level by the Massachusetts Department of Developmental Services Office of Quality Enhancement.

Community Connections is Dedicated to Creating Opportunities for People with Disabilities.

We've done that for 32 years through a team of over 350 caring, compassionate individuals, many of whom have worked here for decades. Through their dedication, Community Connections has grown from just two locations to eight locations all over Southeastern Massachusetts and Cape Cod. We currently serve over 750 individuals and have served thousands of people over the years.



Our mission is to provide life-enriching services that provide optimal independence for people with disabilities.

CCI's extraordinary team supports each person in reaching their potential through goal-driven services and community partnerships. Our vision is to be a thriving, unified organization in which all people are active, involved and empowered.

ARTWORK | THIS PAGE
& FRONT COVER | BY
YARMOUTH DAY CENTER

Community Connections Inc. Opportunities for People with Disabilities

Dear Friends,

This past year was truly a transitional year for Community Connections on a number of levels as we experienced several significant changes in the areas of leadership, facilities and in fundraising.

Perhaps none of the changes were bigger than the decision by Donna Sabecky to step down as our President and Founder. Donna had been at the helm of CCI for over 32 years. In that time she oversaw the growth of the agency from one location to an agency today serving over 750 individuals at 8 sites. Her impact and influence on the work we do today will be with us for many years to come.

While the search for a new President/CEO was underway, the agency was fortunate to have Kim Comart leading us as interim Executive Director for much of the fiscal year. Kim's guidance proved to be invaluable as he worked tirelessly to help strengthen our board, and expand our fundraising capacity. We appreciate all Kim helped us achieve in the time he was with us.

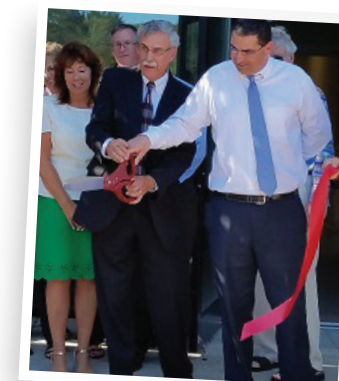
As we look ahead, it is abundantly clear to us that we simply cannot expect to be able to continue to rely almost exclusively on state and federal funding. With that thought in mind, we are committed to finding ways to strengthen our fundraising efforts. As you'll see in the pages of this report, we have implemented a few new initiatives to help us reach our goals including the "Kind Hearts Ambassador", and the Innovation Fund.

To complete our transitional year, in June the Board appointed David Botting as our new President/CEO effective July 1, 2017. Dave was our Chief Financial Officer for the previous 2 years and we were thrilled he threw his hat in the ring for CEO. We are proud to have him serving the organization in this capacity as he is always focused on what is best for our mission, our clients, and our staff. He brings a deep sense of passion and integrity to his work. Dave has hired Rob Mucha to replace him as CFO and our leadership team is complete and ready to hit the ground running in FY18.

Thank you for your support during this past year and we look forward to serving this wonderful community in the year to come.

With gratitude,

Christopher Kirrane, Esq.



FY-2017 BOARD OF DIRECTORS

Christopher Kirrane, Chairman
Dunning, Kirrane, McNichols,
and Garner, LLP

Sergio Balegno, Vice Chairman
Ascend2 Partners, LLC

Peter G. Lemire, Treasurer
Peter G. Lemire, Sr., CPA, LLC

Masa Bearse, Clerk
Totally Mobile, LLC

Kim Comart
Interim Executive Director
Community Connections, Inc.

Donna Sabecky
Former President & CEO
Community Connections, Inc

Carmel Gilberti, Esq.
Gilberti & Associates, PC

Dominic Macone
Heritage Print Solutions

Scott Vandersall
Cape Cod Five Cents
Savings Bank

Jorie Fleming
Willaim Raveis Real Estate

Allison McEachern
Rogers & Gray
Insurance Agency

John Beyer
John Beyer Financial Services

LEADERSHIP

Joseph Krajewski
Chief Operating Officer

David Botting
Chief Financial Officer

Susan Reardon
Vice President
Human Resources

RECIPIENTS OF COMMUNITY CONNECTIONS

SERVICE

Awards

30 Years

Joseph Krajewski, Chief Operating Officer
Michelle Souza, Licensed PTA

25 Years

Maria Pavao, Program Manager, FHLS

20 Years

Terri Arruda, Case Manager, FRHE
Patty Mejia, Developmental Specialist, FHLS
Judy Kiernan, Developmental Specialist, GNBHS

15 Years

Kristen Codega, Program Manager, GNBHS
Lynn Nogueira, Program Manager, GNTS
Simone Laferriere-Rego, Therapy Specialist, FRHS

10 Years of Service

Linda DePippo, RN, FRHS
Linda Moore, Developmental Specialist, YCCH
Donnella Pocknett, Administrative Assistant, MCCH
James Monteiro, Driver, FRTS
John Paiva, Therapy Specialist, FRHS
Noemi Nieves, Developmental Specialist, FHLS
Ana DePippo, Developmental Specialist, FRLS
Patricia MacMakin, Therapy Specialist, YCCH
Jeffrey Griffin, Driver, FRTS
Linda Correa, Developmental Specialist, FRLS
Richard Morey, Driver/Maintenance, CCTS

5 Years of Service

Corina Shea, Case Manager, PHS
Kenny Nobrega, Case Manager, FRLS
Kevin Madeira, Developmental Specialist, Driver, FRLS/FRTS
Patricia Patten, Payroll Benefits Manager, ADMIN
Laurie Pereira, Program Coordinator, FRES
Jennifer Oliveira, Program Manager, FRHE
Paul Carroll, Aide, FRLS
Vanessa Machado, Developmental Specialist, FHLS
Roland Lavallee, Driver, GNTS
Theresa Fontes, Driver, GNTS



PATRICIA MACMAKIN

employee of the year!

Every year we select an Employee of the Year from the pool of individuals who were selected as Employees of the Quarter, over the course of the year. These are employees who consistently provide the highest quality services in their jobs. This year's group of candidates included 35 employees.

This year's winner also received her 10-year service award, Patricia MacMakin, Therapy Specialist at our Yarmouth Day Program.

Patricia began working for CCI back in 2006 when she was hired at the Yarmouth Day Program as an Aide and was quickly promoted to the Therapy Specialist role. Her stand out attributes are her kindness, patience, professionalism, and is considerate of other's needs.

Ashling Sullivan, Patricia's Manager, said "Patricia is a great role model to staff and clients at the program.

Her calm and patient demeanor make her a magnet for clients, who seek her out to sing, go for walks, or just to say hello. The extra time she takes with our clients makes them reassured they are in good hands here"

Congratulations Patricia to all you have accomplished and your commitment to the organization and the people we serve!

Pictured l to r: Karen Rodrigues, Service Director, Patricia MacMakin, Ashling Sullivan, Manager Yarmouth Day Center

MEET THE Wellness Warriors

Community Connections dove head first into Wellness in April 2017 when the first Wellness Committee meeting was held.

The committee is a cross-functional group of employees who represent all eight of our locations and have a personal interest or passion for Wellness.

The mission of the committee is to "promote and encourage healthy lifestyle choices that support the wellness of the mind, body, and spirit of our employees and the individuals we serve. Also, to inspire individuals to take responsibility for their own health and well-being".

With that goal in mind, the Wellness Committee named themselves the "Wellness Warriors" and selected a logo, created by a committee member, to spread the word about wellness.

"Live, Work, Be Well" is the tagline used to remind all our employees and consumers that wellness is an important focus for us as a community and all that we do as an agency.

ARTWORK | BY YARMOUTH DAY CENTER



The Wellness Warriors are focusing on four key areas of wellness including nutrition and healthy eating, fitness, healthy living (health education, and renewing the spirit).

A calendar of quarterly themes related to these areas of focus was developed and each location now has bulletin board containing articles, healthy recipes, and activities to help promote a healthier lifestyle.

"Free Fruit Friday" was recently implemented by the Wellness Warriors, providing free fruit to staff on the first Friday of every month.

The Wellness Warriors plans to implement monthly wellness challenges that not only benefit employees but the individuals we serve as well by incorporating their quarterly themes into related program activities.

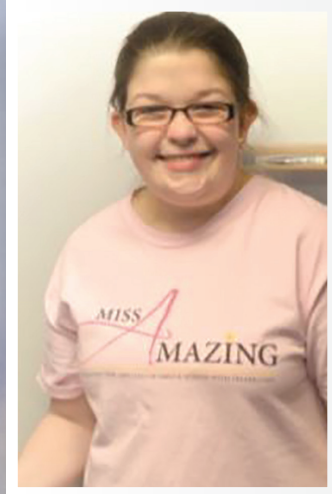
The Wellness Warriors look forward to impacting the wellness at CCI for all our employees and the clients we serve.



Pictured l to r: Back Row: Deb Oliveira, Vicki Baxter, Jim Keller, Tricia Patten, Rocco Achille, Adna Mikvlic, Sue Readron Front Row: Susan Moreira, Deb LePage, Valarie Teves



SPOTLIGHT ON young adults



NICOLE

growing for the future

Nicole has been attending our Fall River Lifes Skills program for two years and has done an amazing job working towards her goals.

When she first arrived to our program, Nicole was eager to be apart of all activities and create relationships with her peers. She has learned to work well with others and maintain appropriate boundaries with peers.

Nicole is currently taking classes at Bristol County Community College and is also working a part-time job.



TOMMY

feels happy and at home

Tommy relocated with his family to Cape Cod in early 2016 and started working with our Cape Cod Employment Services program.

In June 2017, Tommy began working at Subway two days a week as a Dishwasher and states he likes his job and the people he works with. His confidence in the position has grown immensely and his managers at Subway were so pleased with his work that he was given a \$20 Cumberland Farms Gift Card as a thank you.

Tommy's family was hesitant at first, leaving behind an area where he was comfortable. Since arriving at CCI Tommy has made a group of friends and is very active in the community.



JOSHUA

successful transition

Josh recently transitioned from the Boston League School into adult services at the Fall River Life Skills program this past summer.

Prior to the transition, FRLS program manager, Tanya, worked closely with Josh's counselor at the League school to observe the exact services Josh needed to ensure a successful transition.

Because of the prior preparation up front, Joshua has a successful transition into the FRLS program. He participates in group activities, engages with peers, enjoys coming to program, and continues to strive daily.



YARELYS

overcoming obstacles

Yarelys came to our Pre-ETS program with some social skill struggles and hoped to work in either a retail environment or kitchen.

After completing Work Place Readiness training, Yarelys got an internship at Burlington Coat Factory. She tags and organizes clothing to make sure it is in the proper department. When she completes a task, she always asks for additional responsibilities.

Yarelys has thrived in the environment and has been able to increase her social skills. She arrives early, has not yet missed a day, and has become more comfortable with her supervisor and anyone she interacts with at the store.



AMY

Made the right choice

"I know deep down in my heart that I made the right decision. I feel the love you all have for my daughter. Plus, Amy lets me know every time I drop her off how happy she is. It is a nice feeling of security knowing there are great people like the staff at the program who truly care for the clients."

- Amy's Mom

Amy began attending our Fall River Day Habilitation program (Davol St.), on April 7, 2017. She previously attended South Coast Education Collaborative (SCEC) in Seekonk.

Prior to her transition into our program, the staff at Davol Street worked closely with Amy's staff at SCEC, allowing Amy to visit the program several times before starting full time. Amy's mom says she was hesitant at first changing programs.

"I had the PT and nurse from SCEC meet with some of the staff and tour the building. This helped with the decision

of choosing Community Connections".

Amy is a sweet, young lady who is outgoing and ALWAYS smiling. She enjoys using the iPad, participating in sensory activities, playing bean bag toss, listening to music, having her hair styled by our staff, and attending the weekly exercise group.

"I want to thank the girls that do Amy's hair and nails. What a beautiful job they do."

She has one to one support for her safety and well-being and has started using a communication notebook to choose an activity

she would like to do with her support staff.

Amy loves to socialize with her peers and staff members. She moves throughout the program, with the help of her walker and staff support, to visit others.

"Thank you to all her one on ones for entertaining her daily with all different activities." Having Amy move every day in her gait trainer and having her feel the independence she feels going from room to room greeting and making new friends."

ARTWORK BY YARMOUTH DAY CENTER CLIENT

CCI PROGRAMS

bythenumbers

DAY HABILITATION SERVICES

UTILIZATION

87%
Average Daily Attendance Rate

8 locations in Southeastern Mass

Provide services to **603** Individuals

PARTICIPATION SATISFACTION

96%
of Individuals we serve that are satisfied with the services they receive

results from our annual survey of participation satisfaction

HEALTH AND WELL-BEING

All programs were challenged to focus on health and wellness activities to improve the overall health of individuals

These activities resulted in a 6% decrease in the amount of days participants were hospitalized

-6%

EMPLOYMENT SERVICES

UTILIZATION

17.5%
increase in total served from FY '16

Provide services to **365** individuals both on and off Cape Cod

Through the development of Pre-employment Transition Services to students with disabilities & existing relationship with school departments

2X
amount of school age students served from FY '16

Provided employment services to 58 special needs students

PARTICIPATION SATISFACTION

99%
individuals served are satisfied with the services they receive, according to the annual survey of participant satisfaction

100%
of companies employing CCI participants satisfied with CCI services & supports

JOB PLACEMENT

NEW JOB PLACEMENTS

48	FY'16
55	FY'17

All participants placed in jobs are on the employer's payroll and earn the same wages and receive the same benefits as their non-disabled co-workers.

TRANSPORTATION

UTILIZATION

Over 100
CCI vehicles provide transportation services

TO AND FROM 7
of our Day Habilitation Locations

In total the transportation services provide **33,000** trips **TO** **539** individuals attending our Day Habilitation Services

PARTICIPATION SATISFACTION

97%
service satisfaction from participants, family, and funders according to our annual survey results

SAFETY AND WELL-BEING

Community Connections highly values the safety and well-being of all its drivers and passengers, closely monitoring driver training & performance

All transportation programs successfully passed desk audits performed by local transit authorities that focus on vehicle and driver safety.

POSTIVE BEHAVIORAL SUPPORTS

CCI HighFive



PBS is a statewide initiative that Community Connections Inc. is incorporating into all of its services and programs. This past year, our Implementation Team developed a tool to ensure that all staff are applying PBS principals on a day-to-day basis. The tool that was developed was the CCI High Five.

The CCI High Five was created to help increase our attention to positive behaviors and less attention to negative behaviors, one of the most important aspects of Universal Supports in PBS. All staff are using

the CCI High Five to provide positive feedback to other staff and consumers in a tangible way.

The High Five is used whenever someone wants to show their appreciation, provide positive feedback, or acknowledge a good deed, act, or job well done toward a co-worker or consumer.

Appreciation can be shown to anyone at any time!

ARTWORK BY YARMOUTH DAY CENTER CLIENT

InnovationFund



The Innovation Fund was put together to honor Donna Sabecky, founder and former President & CEO of Community Connections, Inc (CCI). Donna founded CCI in 1985 to provide services to people with developmental and cognitive disabilities, with the goal of helping them become independent and productive members of their community. Community Connections, Inc. pursues this vision on a daily basis.

In January 2017, Donna, along with her physicians, decided it was best for her to step down from the organization due to health complications.

Donna is still close to the organization, serving on the Board of Directors and will

continue to be involved and volunteer at future CCI special events. We thank Donna for her vision to see this agency prosper as it does today, and for all of the individuals' lives she has changed for the better over the past 32 years.

Donations to the Innovation Fund help support professional development of CCI staff and innovative programs for individuals who attend Community Connections to foster independence, self-advocacy and/or self-determination.

Plans are in the process to use the collected donations, over \$16,000 so far, to fund leadership and development training for our staff members.

SUPPORTERS

- American Construction Corporation, Patrick & Mary Coburn
- The Arc of Cape Cod
- Association of Developmental Disabilities Providers (ADDP)
- Sergio & Lisa Belegno
- Adrienne Bender
- David Botting
- Debra Brosnan
- Donna Buonopane
- Comart & Associates
- Thomas & Margaret Corey
- Elena Gatti
- Cristy Elkins
- Ann Garrahan
- Jean Catherine Gillis
- Bea Gremlich
- Celine & Robert Hardy
- Johnson & Johnson, Inc.
- Joseph & Davonia Keller and Mary Puzio
- Eugene & Eileen Lonergan
- Milhench Supply, Mark Milhench
- Amy Ruth Nevis
- Tina Patrissi
- Stasia & Sean Powers
- James & Janet Rice
- Edward Robinson-Lynch
- Robert Rush
- Donna Sabecky
- Marie Sabecky
- Seven Hills Foundation
- Diane M. Thayer

THANK YOU!

ARTWORK ON THESE PAGES | BY YARMOUTH DAY CENTER

DONNA'S FAREWELL PARTY



Joseph Keller

Who is Joseph Keller? Many would say "golfer," He is after all a top-ranked Senior Amateur player in New England. Joe is known far and wide for his golf skill, having won many tournaments over the years. He has played some of the most famous golf courses including Augusta, Pebble Beach, and Pine Valley, just to name of few.

Others would tell you "Realtor/Investor/Land Lord." Joe is the owner of Keller Company, Inc. of Hyannis. Keller Company owns and manages 150,000 square feet in 7 buildings, 2 of which include Community Connections, Inc. as a tenant. Joe, his "right hand" Mary Puzio and their staff often focus on the needs of a non-profit and find properties that perfectly fit the organization's needs.

At Community Connections, Inc., we call him a "kind heart." In the short time we have been associated with him, he has been a tremendous supporter and friend. For both our new South Yarmouth location and our Mashpee Day Center he has helped us find the perfect location, helping it to meet the needs of our clients and staff. His generosity is felt throughout Cape Cod at many non-profits including Cape Cod Healthcare,



CCI 2017 Kind Hearts Ambassador, Joseph Keller



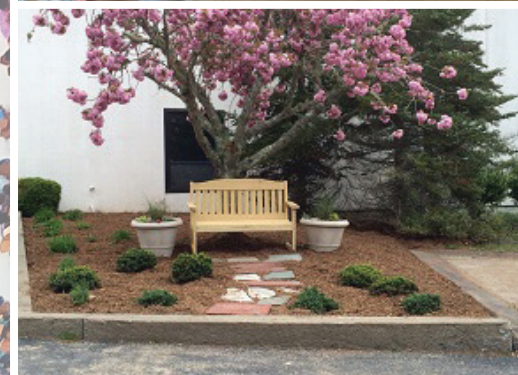
Cape Cod Symphony and the Cotuit Center for the Arts.

In 2015, Joe purchased the Pathways Office building along with his partner Bruce MacGregor. They transformed the former Christmas Tree Shops headquarters on Whites Path into the Pathway Office Park specifically for nonprofit tenants. At the time, Community Connections was getting to the end of our lease. The headquarters/S. Yarmouth program

site, no longer fit the needs of the organization and it made sense to move. Joe was there with the perfect opportunity, just a short move down the road, to a larger, better designed, and customized to fit the needs of our clients and staff. It was a perfect fit.

We are so grateful for our donors like Joe, who continue to support Community Connections, in so many ways.

SOUTH YARMOUTH DAY CENTER GRAND OPENING



THANKYOU! TO ALL OUR DONORS

July 1, 2016 to June 30, 2017

CHAIRMAN'S CIRCLE

[\$5,000 & ABOVE]

Sergio & Lisa Balegno,
In Honor of Sam Belegno
Carmel & Jennifer Gilbert
HUB International New England
Joseph & Davonia Keller
Arnold's Lobster & Clam Bar
The Burton A. and Maxine C. Rice
Foundation Trust

PRESIDENT'S CIRCLE

[\$1,000 TO \$4,999]

American Construction
Corporation
BayCoast Bank
Cape Cod Five Cents Savings
Bank Charitable Foundation
Trust
Judith Coakley
Comart and Associates
Design Principles
Harvard Pilgrim Health Care
Foundation
Hyannis Toyota
Peter G. Lemire, Sr. CPA, LLC
Mallard Printing, Inc.
Rogers & Gray Insurance Agency
Mr. Damian McCann & Ms. M.
Isabel McCann
Mechanics Mill One, LLC
Same Day Surgicare of NE., Inc.
Starkweather & Shepley Insurance
Brokerage, Inc.
The Unity Club of Plymouth, MA
Scott & Amy Vandersall
Zammito Automotive Group, Inc.

DIRECTOR'S CIRCLE

[\$500 TO \$999]

Agway Of Cape Cod
Association of Developmental
Disabilities Providers (ADDP)
Bayside Resort Hotel
BDO USA , LLP
Benevity Community Impact Fund
Cape Associates
Cardi's Furniture
Certified Rescue Courses
Mr. & Mrs. Thomas Corey
Mr. Chad Dessert
Enterprise Fleet Management
Fall River Pawn Brokers
Mr. & Mrs. Brian Foley

Hanover Insurance Group
iheart Media Cape Cod
Inn Season Resorts
Donald & Nancy Jones
Mr. & Mrs. Joseph Krajewski
Law Office of Tracey L. Taylor
Eugene & Eileen Lonergan
Ms. Sheila McGlinchey
Mid Cape Tire & Auto
The Nemasket Group, Inc.
Quality Van Sales, Inc.
Route 6 Marketplace, LLC
John Salkowski in memory of
Helen
Pamela Smith
Brian & Laura Urban
W.B. Mason Co., Inc.

PATRONS

[\$100 TO \$499]

AAA Northeast & Southern New
England
Gissell Abreu-Rodriguez
Paul Achille
Joseph Aguiar
Joseph Allen
Mr. & Mrs. Charles Austin
Susan Ayers in memory of Gerry
Ayers Jr.
Mr. & Mrs. Leonard Baillargeon
Sara C. Bardan
Joanne, Kyle & Ryan Beland
Peter E. Bentivegna
Mr. & Mrs. Randell Bergeron
Toni Berlandy
Roger & Mary Boissonneau
In Memory of Brian
Mr. & Mrs. David Botting
Mr. & Mrs. William Braddock
Branco-Gardner Insurance Agency
Inc.
Mr. & Mrs. Jeffrey Brand
Mr. & Mrs. Richard Brannelly
Brayton Point Realty
Mr. & Mrs. Blair Breton
Mr. & Mrs. Richard Brewer
Debra Brosan
Nancy Burgess
Pamela Burgess
Frances Camara
Canning Service & Alignment
Center, Inc
Mr. & Mrs. Paul Carey
Ms. Carol Hughes & Ms. Carol
Patterson

Mr. & Mrs. Bernard Cartin
Charles River Boat Company
Elizabeth Chin
Donna Chong Realtor
Ms. Donna Chung"
Clean Right Cleaning Solutions
Domino's, New Bedford
Kelly Connor
Patricia Connor
Construction Industries Of
Massachusetts
Mr. & Mrs. Richard Conway
Doreen Correa
Mr. & Mrs. Paul Correa
Paul Correia
Mr. & Mrs. Andrew Corrigan
Cottage Street Motors Inc.
LC Mechanical, Inc.
Covell Brothers Landscaping
Ellen Crete
Mr. & Mrs. James Culley
Mark Curran
Barbara Cusick
Anonymous
Dennis Police Association
Lucia Deoliveira
Mr. & Mrs. David Destefano
Mr. & Mrs. Ruben Deveau
Devereux Advanced Behavioral
Health Audit Services
Department
Dighton Fire Association
Dighton Jr. Fire Fighters
Dovell Construction
John P. Doyle
Dr. Alan Drabkin
Mr. & Mrs. Frederic Duburon
Duke's Bakery
Ebb & Flow Wellness
Montgomery Erwin
Margaret Esposito
Eversource
Julie Falk
Family Chiropractic Center, Inc.
Alfred T. Fernandes
Mr. & Mrs. Joe Fernandez
First Citizens' Federal Credit
Five Star Collision Center
Christopher Flanagan
Jorie Fleming
Kristine Fletcher
Daniel Fleurent
G M Landscaping
Maureen C. Gallagher
Louis R. Gallo, Gallo Constuction
Co. Inc.

Diana Garmus
Mrs. Ann M. Garrahan
Ellen Garrett
Elena F. Gatti
Gem Air Services Inc.
Mr. & Mrs. Thomas Gibbons
Mr. & Mrs. Craig Gibeault
Barry Goggins
James Golen
Mr. & Mrs. Lisa Gosselin
Mr. & Mrs. Yoshiyuki Goto
Shannon Green
Ms. Bea Gremlich & Ms. Pat
Armstrong
Kenneth Grieder
Griggs & Browne Pest Control
Franz Gross
Mr. & Mrs. Robert Hardy
Ms. Linda Heath & Ms. Ashley
Calarese
Heritage Small Engine Repair
Holy Trinity School
Lori Horta
Barbara Huff
Cassie Johnston
Johnson & Johnson
Seven Hills Foundation
Katie's Ice Cream
Mr. & Mrs. John Kelly
Mr. & Mrs. Kevin Kelly
Mr. & Mrs. Robert Kelly
Ryan Kelly
KenMark Office Systems
Aline Kenney
Mr. & Mrs. William Kiniry
Mr. & Mrs. Harland Knox
Thomas W. Krajewski
Leathernecks MC
Len and Joan Leonardo
Warren Leuders
Lift & Care Systems, Inc.
Cassandra Lima
Martha Lindsay
Donald G. Lloyd
Fire Protection Services
Ursula Marrero
Eleventh Hour Design
Ms. Louise Martling"
Mr. & Mrs. Patrick McAvennie
Deborah McGowan
Mr. & Mrs. Paul G. Medeiros
Mr. & Mrs. Thomas Medeiros
Kellie Meyer
Mark Milhench
Dave Miller
Maria Miranda

Sharon Montecalvo
Morin & Pepin, Inc
Beverly Mota
Billy Mullin
Melissa Nash
Mr. & Mrs. Michael Nash
Amy Ruth Nevis
Next Monitoring Inc.
Lynn Nogueira
Susan Oates
John M. Paiva
Lynne Palker
James V. Palumbo
Pamela Palumbo
Laura Palumbo-Hanson
Papa Gino's
Ms. Rhonda Kershaw Partridge &
Mr. Keith Partridge
Maria
Samantha Pereira
Mr. & Mrs. Murray Phelps
Wallace-Ann Pierce
Michelle Pinkoski
Barbara Platt
In Memory of Denise
Stasia & Sean Powers
Mr. & Mrs. Michael Princi
Providence Bruins
Providers' Council
Mr. & Mrs. David Rackliffe
Mr. & Mrs. Richard Raitto
Mr. & Mrs. Scott Ravelson
Beverly Rebello
Resendes Electric, Inc.
Mary E. Rezendes
Riccardi's Restaurant
Mr. & Mrs. James Rice
Riverview Bait & Tackle

Synergy Consultants, Inc
Ms. Kimberly Roche & Mr. David
Johanson
In Honor of Erin Foley
Muriel Roderiques
Fatima Rodrigues
Karyn Rodrigues
Elizabeth Roma
Anonymous
Robert Rush
Donna Sabecky
Marie Sabecky
Carol Sanders
Sarmento's Imports
Diane Schaller-Hough
Seafood Sam's
Bernie & Beverly Serletic
Alanna Carreiro & Paul Shea
Mr. & Mrs. Andy Sidati
Craig Silva
Century Paving & Construction
Corp
Wayne Silvia
Mr. & Mrs. Stanley Skypeck
Everett & Linda Smith
Sandra Stillman
Subway - Plymouth Avenue Fall
River
Ashling Sullivan
Robert Sullivan
Katlyn Sylvia
Mr. & Mrs. Antone Taveira
The Arc of Cape Cod
Tufts Health Plan
Unemployment Services
Corporation
Verizon Foundation
Lesley Viera
Village Veterinary Hospital
Thomas Vital
Mr. & Mrs. Edward Viveiros
Mary E. Volpe
Walgreens
Patricia Wallace
Elizabeth A. Ward MS, OTR
Kimberly Ward
James Watt
Suzanne Weiss Pond
John & Eileen White
In Memory of Bill Kurgan & Jim
Bakum
Wicked Clean Dog
Yankee Candle
William P. & Karen O.Young
In Honor of Heather Young

FRIENDS

[UP TO \$100]

Mr. & Mrs. Steven Abrantes

John Achille
Rocco Achille
Acoreana Manufacturing Company
Mr. & Mrs. Antonio Aguiar
Janice Ahonen
Dawn Silva Akeley
Trish Alexander
Distany Allard
Doug Allen
Eric S. Allen
Russell Allen
Carol Almeida
Mary J. Almeida
Mr. & Mrs. Walter Alvezi
Rosa M. Amaral
Amazon Smiles
Christine Anderson
Greg Anderson
Mr. & Mrs. Nels Anderson
Mr. & Mrs. Alfred Andrade
Mr. & Mrs. Richard Andre
Jill Andreola
Ian Andrew
Patty Andrews
Mara Archer
Leigh Armitstead
Therese Arruda
Susan Astle
Mr. & Mrs. Henry Attar
Margaret Attar
Mr. & Mrs. R. C. Austin
Mr. & Mrs. Tiago Avelar
Deirdre Avila
Ray's Property Enhancements, Inc.
B & K Auto Machine Shop
Paul Babin
Lisa Bacewicz
Salem Wax Museum
Jaime Bannister
Christine Barbosa
Michael Bardan
Mr. & Mrs. Dennis Barton
Janine Batcheller
Mr. & Mrs. Douglas Beaulieu
Catherine Beausleil
Mr. & Mrs. Marshall Beausoleil
Beauty Bar
Paula Beisheim
Mr. & Mrs. Peter Beisheim
Noveline E. Beltram
Adrienne Bender
Melissa Berard
Mr. & Mrs. Reginald Berard
Wendy Berg
Peg Bernard
Mad Max Shirt Company
Maureen Berry
Tina Bessette
Randy Betts
John Beyer

Mr. & Mrs. Simone Blanchette
Mr. & Mrs. Douglas Boardman
Andy Bobola
Mr. & Mrs. Peter Bono
Ann M. Borges, LLC, CPA
Kirsten Borges
Mr. & Mrs. Robert Bourdon
Tammylou Bouy
Mr. & Mrs. Richard Bowen
Richard Bowman
Mr. & Mrs. Ernesto Branco
Susan L. Briggs
Ana Brilhante
Sarah Britton
Mr. & Mrs. Craig Brogan
Ashley Bronson
Bridget Buckley
Donna Buonopane
Amelia Burns
Joe Burns
Anonymous
Emily Burt
Mr. & Mrs. Brian Butler
Gil's Distribution
Mr. & Mrs. Stephen Cabral
Pam Cabral
Sheila Cabral
Raquel Cabral
Roger Cahoon
Wally & Angie Cahoon
Elizabeth Calheta
California Nails
Jennifer Calvao
Caitlin Camara
Jackie Campbell
Roxanne Campbell
Canal Fuel Co
Mary Candler
Peter & Freda Capernaros
Jose Cardeiro
Cardoso's Auto Service
Jim Carey
Mr. & Mrs. John Carey
Wonder Carey
Andreia Carmo
Russell Carreiro
Jennifer Carreiro
Mr. & Mrs. Victor Carvalho
Antonio Carvalho
Mr. & Mrs. Robert Cashins
Mr. & Mrs. Paul Cass
Chris Caterino
Ray Caterino
Cerulli's Barber Shop
Mr. & Mrs. Hartland Chadwick
E.Chaleki
Amanda Cheatom
Stephen Childs
Tom Christianson
Mary Ciampa





Kudos to such talent

All artwork throughout this annual report has been created by CCI clients.

THANKYOU! TO ALL OUR DONORS 7/1/16 to 6/30/17

William Ciocca
 JoAnne Cioper
 Elizabeth G. Clancy
 Peter Clements
 Peabody Essex Museum
 Michelle Coelho
 Pamela Coelho
 Hilda Cohen
 Regina Cohen
 Brienna Colacone
 Mr. & Mrs. David Collins
 Continent Bakery
 Anonymous
 Manuela Cormier
 Hawthorne Hotel
 Phyllis Corrado
 Belmira Correia
 Jocelynn Cory
 Mr. & Mrs. Alan Costa
 Mr. & Mrs. Brian Costa
 Tammy Costa
 Kathy Costello
 Anne Marie Cote
 Country Arms Motel
 Mr. & Mrs. Raymond Cousineau
 Guilda Couto
 Mr. & Mrs. Craig Crocker
 Linda M. Crocker
 Deborah Crossman
 Laura A. Crumley
 Lisa Cubellis
 Edwin Curtis
 CVS Pharmacy
 Mr. & Mrs. Dean DaCosta
 Mary Beth DaSilva
 Deborah Defalco-Furtado
 Donna Deleon
 Shaun DeOliveira
 Compulsive Salon
 Mr. & Mrs. Joao Desousa
 Jennifer Leisman Dessert
 Mr. & Mrs. Ryan Dessert
 Mr. & Mrs. Lee DeTerra
 Dave Dias
 Judy Dias
 Marisa Dias
 Mr. & Mrs. Timothy Dillon
 Santo Christo Federal Credit Union
 Mr. & Mrs. Mark Dmohowski
 Anonymous

Dolphin Fleet of Provincetown
 Linda Donley-Hosking
 Janice Doucette
 Tim Dresser
 Dana Dufur
 Joann Duguay
 5 Wits Companies
 Jewels Dupras
 Kayla Dupuis
 Jeanne Durand
 Mr. & Mrs. Joel Dwyer
 Mr. & Mrs. Fred Earle
 William Earle
 Eastman Discount Oil
 Karen Edwards
 Regina Egan
 Cristy Elkins
 Anonymous
 Mr. & Mrs. Stewart Ellis
 Wendy S. Espinola
 F1 Boston
 Fairhaven Job Club
 Manuel Faria
 Deborah Farias
 Kathy Farias
 Boden Fassi
 Renee Feldman
 John Ferguson
 Linda Ferland
 Mr. & Mrs. Brian Fernandez
 Elsie Ferreira
 James M. Ferreira
 Kathy Ferreira
 Kelly Ferreira
 Maria Ferreira
 Brittany Fidler
 Representative Carole Fiola
 B.R. Fireman
 The Fishermans Lane

Christine Flagg, CC Designs
 Mr. & Mrs. Peter Flaherty
 Don Fleet
 Mr. & Mrs. David Fletcher
 Deborah Flynn
 Joe Flynn
 Mr. & Mrs. John Flynn
 Joseph Flynn
 Ruth Flynn
 Ebba Forgue
 Geoffrey Forgue
 Jessica Forgue
 Jillian Forgue
 Mr. & Mrs. Norman Fournier
 Maggie Fox
 David Franco-Rocha
 Lucille Fredette
 Cathy Freeman
 GTC Falcon Inc
 Arthur G. Froment
 Frontera Grill Mexican Restaurant
 Tammie Frye
 Jen Furtado
 Nancy M. Furtado
 Michael Gagne
 Chelsea Gallagher
 Colleen Gallagher
 Priscilla Garafalo
 Darrin Garcia
 Mary Beth Garrahan
 Barbara Gaspar
 Elizabeta Gega
 Becky Gelinias
 Kit George
 Maria Gibbons
 Edwin Gibbs
 Tommy Gibbs
 Gibbs Disposal
 The Gifford Family

Gina Gilbert
 Dan Gilfoy
 Mr. & Mrs. Robert Gilfoy
 Megan Gill
 Jean Catherine Gillis
 Krysta Gilmette
 Patricia Givens
 Beth Gomes
 Mr. & Mrs. James Gomes
 Vanessa Gomes
 Patricia Goss
 Marilyn Gosson
 Mr. & Mrs. Hernani Guilherme
 Beth Gustin
 Julie Guthrie
 Kiera Haaland
 Karen Haasen
 Mr. & Mrs. Andrew Hadley
 Mary Hadley
 Mr. & Mrs. Joseph Hall
 Mike Hall
 Theresa Halliwell
 Dean Halunen
 Lori Handerhan
 Helena Hansen
 Annie Hanson
 Amanda Harrison
 Harvest Market
 Deborah Haynes
 Charlene Hebert
 Brenda Herbeck
 Christina Hermenegildo
 Catherine Heuberger
 Stephanie Hight
 Riley Hills
 Mr. & Mrs. Wayne Holden
 Mr. & Mrs. Thomas Holden
 David Holmes
 Sandra Holmes

THANKYOU! TO ALL OUR DONORS 7/1/16 to 6/30/17

Rachel Holmgren
 Nathan Hoover
 Lindsey Howard
 Ramona Howard
 Mr. & Mrs. Edward Hoxie
 Jaimin Hubbard
 Shannon Hubley
 Dianne Hunt
 Jeffrey Hunt
 Patricia Hurley
 Winifred Hutchinson
 Susan Hutson
 Ice Cream Sandwich
 Integrity Fire Extinguisher Service
 Rachel Isabelle
 Jeannette Iwanski
 Anne Jacques
 Mary Janczura
 Mr. & Mrs. Stanley Janczura
 Linda Johnsen
 David Johnson
 Kelcie Johnson
 Maureen Jones
 Obidiya Kalu
 Sandy Neck Motel
 Katrina's Bakery
 Erika L. Kauranen
 Mr. & Mrs. Ken Keddie
 Rhonda Kershaw
 Mr. & Mrs. John Kile
 Sharon Klein
 Tabitha Knapp
 Taylor Krajewski
 Mr. & Mrs. Gary Kuck
 Mr. & Mrs. Malvin Kvilhaug
 Alex Labossiere
 Michelle Labossiere
 Robert Labossiere
 Tina Labossiere
 Joseph LaBrique
 Mr. & Mrs. Art LaChance
 Simone Laferriere-Rego
 Subway - Sconticut Square
 Debbie Lambert
 Matthew Langewisch
 Mr. & Mrs. Henry Larkowski
 Robert Larsh
 Patricia Lawrence
 Mr. & Mrs. Eugene Leahy
 Mr. & Mrs. Richard Leary
 Samantha Leduc
 Virginia Lee
 Debra LePage
 Rebecca Levasseur
 Millenium Grind LLC
 Amanda Lewis

Michael Lewis
 Cecile Lister
 Susan Lister
 Mr. & Mrs. Joseph Lohmar
 Carolyn Longworth
 Mr. & Mrs. James Lopes
 Allison Lynch
 Alyssa Lynch
 Janice Lynch
 Mary Lynch
 Gail Lyonnais
 Mr. & Mrs. Joseph MacDonald
 Mr. & Mrs. Lawrence Machado
 Maria Machado
 Dana Mackey
 Mac's Soda Bar
 Ann Maloney
 Maraffa's
 David Markell
 Thomas Marshall
 Jessica Marsteller
 Colleen Martin
 M. Martin
 Anonymous
 Katie-Ann Mason
 Mr. & Mrs. Arthur Matos
 Devereux Colorado
 Beth McAlpine
 Sr. AnnMarie McAndrews SND
 Sherry McCarey
 Elaine McCarthy
 Marilyn McCarthy
 Nancy McCuen
 Mike McDermott
 Mr. & Mrs. Fran McDonaugh
 Mr. & Mrs. James McDowell
 Brian McHugh
 Carolyn McKeon
 Latham Center
 Kenneth McTear
 Kelsey McVay
 Anne McVeigh
 Cere McVeigh
 Cassie Medeiros
 Mr. & Mrs. Mark Medeiros
 Anonymous
 Manny Medeiros
 Marie Medeiros
 Air Masters HVAC Services of New England
 Bob Mello
 Mr. & Mrs. Dave Mello
 Mary Mello
 Theresa Mello
 Keayra Mendes
 Merchant Machine, Inc.
 Merchant Square Liquors

T J Russell Supply
 Mr. & Mrs. James Michalski
 Karen Miller
 Jon Miranda
 Mary Jo Miranda
 Michael's Provisions
 Mr. & Mrs. Eugene Mitchell
 Mr. & Mrs. William Mitchell
 Else Mjolhus
 Joseph Moniz
 Melissa Monroe
 Lisa Monteiro
 James Monteiro
 Mr. & Mrs. Orman Moody
 Maria Morales
 Meredith Morgan
 Amy Morin
 Brenda Morrell
 Moto Pizza
 Mr. & Mrs. John Mozeleski
 Robert Mozian
 Maryanne Muldoon
 Charles Murphy
 Patricia Murphy
 Mr. & Mrs. Thomas Myers
 Super Stop & Shop, New Bedford
 Don Naylor
 New England Energy Concepts
 New England Patriots Charitable Foundation
 Nick Nickerson
 Mr. & Mrs. Roy Nickerson
 Kenny Nobrega
 David Noonan
 Lisa O'Connell
 Linda O'Connell-Parent
 Catherine O'Donnell
 Ogil Restaurant
 Aaron O'Gorman
 Mr. & Mrs. Scott OHare
 Jacqueline Oldfield
 Shirley Oldfield
 Anabela Oliveira
 Debra Oliveira
 Jennifer Oliveira
 Bernard Olsen
 Kathleen Olsen
 Maureen Olszowy
 Onset Village Hardware (Ace Hardware)
 Megan O'Rourke
 Mr. & Mrs. Kenneth Pacheco
 Patricia Pacheco
 Bonny Paiva
 Andrea Palumbo
 Anna Palumbo

Elizabeth Palumbo
 Mary Louise Palumbo
 Mr. & Mrs. Richard Palumbo
 Heather Pantano
 Mr. & Mrs. Exlaus Parker
 John Parker
 Barbara Pasquarello
 Tina Patrissi
 Jason Pavao Journeyman Electrician
 Donna Pelchat
 Nicole Pelletier
 Mr. & Mrs. Roger Peloquin
 Laurie Pereira
 Periwinkles
 Clifford W. Perry, Builder
 Mary Perry
 Angela Pesce
 Grace Peters
 Teresa J. Peters
 Sandwich Pizza
 Susan Phillips
 Sarah Pichler
 Picture This
 Pier View Restaurant
 John Pietruszka
 Mr. & Mrs. Donald Pires
 Dorothy Pires
 In Memory of Darlene Medeiros
 Joseph Plozai
 Barbara Polcaro
 Elizabeth Ponte
 Helen Ponte
 Lucille Post
 Prospect Hill Consultants, Inc
 Mr. & Mrs. Doug Purdy
 Linda Purdy
 Canning Service Center
 Bruce Quigley
 Nicole Ranos
 Andrea Raposa
 Kenny Raymond
 Domingo U. Razon
 Sue & Bill Reardon
 Judith Rebello
 The Red Sox Foundation
 Laura Redmond
 Odete Rego
 Edith Rehbein
 Patricia Rehm Macmakin
 Mr. & Mrs. Robert Reilly
 Shannon Reilly
 Julienne Remie
 Joseph Resendes
 Christine Richards
 Jennifer Rimple

Ann M. Ring,
Ryan Family Amusements
Leandra Robichaud
Mia Robinson
Edward Robinson-Lynch
Nina Rodrigues
Paul Rodrigues
Mr. & Mrs. Carlos Rodrigues
Roger's Family Restaurant
Norma Jean Rose
Mr. & Mrs. James Ross
Donna M. Roy
Mr. & Mrs. Neil Rudin
Debra Ruell
Cheryl Russo
Mr. & Mrs. Michael Ruxton
Marc Anthony's LaPizzeria, LTD
Kristen Ann Santos
Nina Saulnier
Mr. & Mrs. John Schubert
Mr. & Mrs. George Scott
Jennifer Scott
Mary Scott
Mr. & Mrs. Donald Seeley
Richard E. Serodio Revocable Trust
Of 1995
Allyn Seward
Eileen Sheehan
Emily Shimansky
Kathi Shonas
Robin Shufelt
Denise Shulman
Mary Beth Sibbio
Diane Silva
Wayne Silvia
Robert Simon
Roberta A. Simon
Paul Singleton
Mathew Skypeck
Mr. & Mrs. Douglas Slone
Tiffany Smith
Susan Soares
Mr. & Mrs. Eduardo Sousa
Erica C. Sousa
Michelle Souza
David M. Sprague
Donatilde St. Gelais
Melissa St. Laurent
Ginny Starvish
Joan M. Steele
Christine Stelk
Meaghan Still
Stop & Shop, Assonet

Stop & Shop, Somerville
Stop & Shop, Sandwich
Mr. & Mrs. David Sullivan
The Shirt Shack
Mr. & Mrs. Paul Sullivan
Richard & Kathleen Swann
Mr. & Mrs. Jack Swanson
Don Sykes
Mr. & Mrs. Ellsworth Sylvaria
Mr. & Mrs. John Sylvia
Marc Sylvia
Rebecca Sylvia
William Tansey
Diane Tapper
Fred Tarr
Monomoy Fuel, Co.
Eric Tavares
Charles Taylor
John Teixeira
Mr. & Mrs. Lena Teixeira
Mr. & Mrs. Timothy Tetreault
Valerie Teves
Diane M. Thayer
Mr. & Mrs. Ronald Thomas
Christian Tobia
Wendy Torres
Mr. & Mrs. Charles Tourjee
Mr. & Mrs. David Trani
Bob Travers
Wendy Travers
James Tremblay
Joseph Tremblay
Becky Tripp
United Way Of Greater
Philadelphia and Southern New
Jersey
Brenda Vallone
David Vaughn
Pauline Vieira
Mr. & Mrs. Glen Viens
Village Toy Shop
Mr. & Mrs. David Vinton
Mr. & Mrs. Joao Viveiros
Gail Walker
Robin Walker
Walmart
Walter's Barber Shop
Stephanie Watts
Stephen Weakley
Mr. & Mrs. Gregory Weatherup
Christie Webber
Mr. & Mrs. Norman Weeks

David Weiss
Patricia Weldon
Mr. & Mrs. Peter Weldon
Mr. & Mrs. Stephen Werby
Donna Werner
Whaleback
Ellen Whelen
Kayla Whipp
Jerry Whitaker
Samantha White
Sheila J. White
Lisa Wilcox
Joy Will
Amy Winn-blier
Tara Wotton
Barbara Young
Jenny Yutz
P. Zou

**IN MEMORY OF
Jeanne Dionne**

Alfred Arruda
Henry & Anne Attar
Margarett M. Attar
Noveline E. Beltram
Pauline Brannelly
Janice Doucette
Jeanne Durand
Jeannette Iwanski
Alice Kenney
Cassandra Lima
Mary Jo Schubert

**IN MEMORY OF
Joe Flynn**

Trish Alexander
Douglas & Bernadette Boardman
Renee Feldman
Deborah Flynn

**IN MEMORY OF
Donald Souza**

Phyllis Corrado
Elizabeth Ward, MS, OTR

**IN MEMORY OF
Gilbert Avila**

Theresa Mello
Joseph Moniz

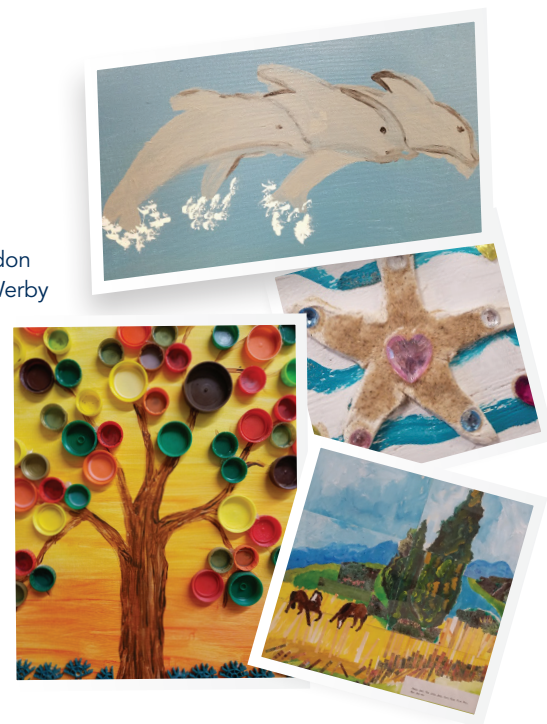
**IN MEMORY OF
Timothy K. Johnson**

Tony Berlandy
Maureen Berry

Sheila & William Braddock
Richard & Mary Conway
Devereux Advanced Behavioral
Health, Audit Services
Department
Devereux Colorado
Timothy & Sally Dillon
Barry Goggins
Lisa Gosselin
Barbara Huff
Pamela Kiniry
Martha Lindsay
Kathleen Olsen
Bruce Quigley
David & Doreen Rackliffe
James & Ann Ross
Donal & Mary Seeley
Barbara & Andy Sidari
Robert J. Simon
Marcia Werby

**IN MEMORY OF
Eric Smith**

Everett & Lynda Smith
Murray & Carole Phelps



Community Connections Inc.
Opportunities for People with Disabilities

Statement of Financial Position

	FY 2017	FY 2016
ASSETS		
Cash and cash equivalents	\$768,891	\$1,963,954
Accounts receivable, net	\$1,832,150	\$1,716,219
Prepaid expenses	\$115,532	\$104,898
Property and equipment, net	\$4,965,672	\$3,474,202
Other Assets	\$42,347	\$41,485
Total assets	\$7,721,592	\$7,300,758
LIABILITIES AND NET ASSETS		
Current portion of notes payable	\$194,847	\$244,897
Current portion of mortgages payable	\$37,146	\$26,230
Current portion of capital lease obligations	\$482,594	\$385,603
Accounts payable and accrued expenses	\$746,903	\$309,529
Accrued salaries and wages	\$743,682	\$718,814
Other current liabilities	\$45,444	\$42,740
Notes payable, net of current portion	\$308,255	\$508,171
Mortgages payable, net of current portion	\$1,111,612	\$694,487
Capital lease obligations, net of current portion	\$812,546	\$1,278,688
Total liabilities	\$4,514,039	\$4,201,181
Net assets	\$3,207,553	\$3,099,577
Total liabilities and net assets	\$7,721,592	\$7,300,758
STATEMENT OF ACTIVITIES		
Revenues, Gains and Other Support		
Contract revenue	\$15,142,189	\$14,738,814
Client service fees	\$72,208	\$82,035
Contributions and fundraising	\$168,884	\$136,940
Gain on sale of property and equipment	\$21,105	\$36,701
Other income	\$27,167	\$15,473
Total revenues, gains and other support	\$15,436,483	\$15,010,963
Expenses		
Program services	\$13,437,170	\$12,767,467
Management and general	\$1,793,289	\$1,837,819
Supporting services	\$98,118	\$84,977
Total expenses	\$15,328,507	\$14,690,283
Change in net assets	\$107,976	\$320,680
Net Assets at Beginning of Year	\$3,099,577	\$2,778,897
Net Assets at End of Year	\$3,207,553	\$3,099,577

A NOTE TO OUR READERS: We do our best to report accurate donor information & sincerely apologize for any misspelling or inadvertent omission of anyone who made a gift to Community Connections during the period 7/1/2016 – 6/30/2017. Please advise us of any error by contacting the administrative office at 800-308-1321. Thank you.

ARTWORK BY FALL RIVER DAY HAB (DAVID SUST) CLIENT

CCI LEADERS RECOGNIZED AT ADDP Conference

The Association of Developmental Disabilities Providers (ADDP) represents 130 private providers to services and supports to people with developmental disabilities and brain injuries in Massachusetts.

Their mission is to promote and ensure the strength of community based providers so they can be successful in improving quality, access, and value of services in the community.

ADDP hosted a Lead! Conference & Expo this past year. The conference provided Community Connections (CCI) the opportunity to hear the latest ideas, trends, practices, and policies impacting services and to engage in discussions to generate new solutions and network with other service providers.

This year's ADDP Lead! Conference &

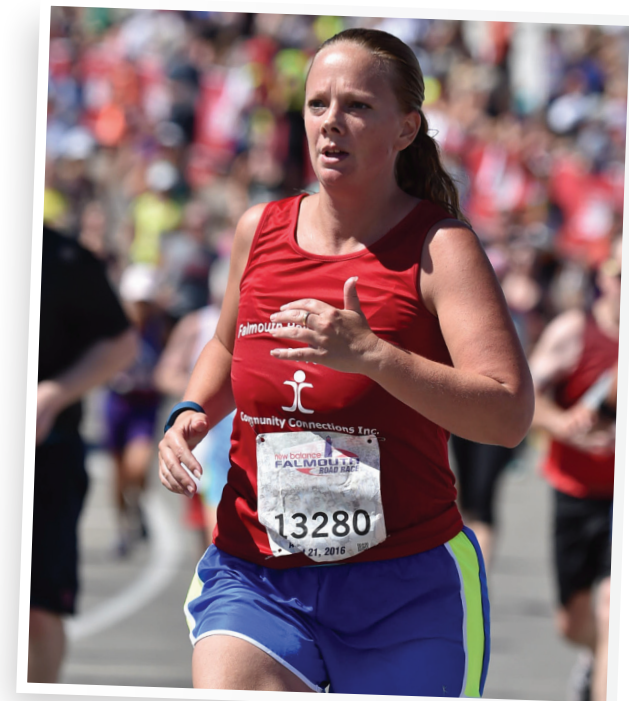
Expo was an extra special day for CCI. Joe Krajewski, Chief Operating Officer, received the Marty Martini Outstanding Leadership Award that acknowledges a leader in the field of developmental disabilities. Joe was presented this award by former President & CEO of CCI, Donna Sabecky.

It was a special day for Donna as well. Not only was she presenting an award, she received one as well. Donna was awarded the Lifetime Achievement Award, honoring all she has done for CCI and ADDP over the past 32 years. It was a great day to congratulate our colleagues and take away vital information that has helped bring new ideas to CCI's programs.

The ADDP Lead! Conference & Expo was held on May 4th, 2017 at the DCU Center in Worcester, MA.

FALMOUTH ROAD RACE

AUGUST 2016



FUNDRAISERS & EVENTS
FY17

ARTWORK BY YARMOUTH DAY CENTER CLIENT

SPAGHETTI SUPPER

APRIL 2017



WALKATHON

SEPTEMBER
2016



ARTWORK BY YARMOUTH DAY CENTER CLIENT



Community Connections Inc.
 Opportunities for People with Disabilities

261 Whites Path, Unit 1
 South Yarmouth, MA 02664

NON-PROFIT ORG.
 U.S. POSTAGE
PAID
 PERMIT NO. 316
 FALL RIVER, MA 02722



Artistic expression flourishes here at CCI! All artwork throughout the CCI FY-2016-2017 Annual Report has been created by our very own clients!

CONNECT WITH US!

Info@CommunityConnectionsInc.org | 800.308.1321

COMMUNITYCONNECTIONSINC.ORG

FACEBOOK.COM/COMMUNITYCONNECTIONSINC | TWITTER.COM/CCIORG

CAPE COD

South Yarmouth
 261 Whites Path, Unit 1
 508.362.1140

Mashpee
 168 Industrial Drive
 508.477.4188

PLYMOUTH

130 Industrial Park Road
 508.747.0451

GREATER NEW BEDFORD

Fairhaven
 10 David Drown Blvd.
 508.990.8194

Wareham
 38 Church Street
 508.748.9595

GREATER FALL RIVER

Fall River
 125 Hartwell Street
 508.678.1210

Fall River
 1082 Davol Street
 508.675.0306

Somerset
 1400 Brayton Point Road
 508.678.3292



ARTWORK BY YARMOUTH DAY CENTER CLIENT